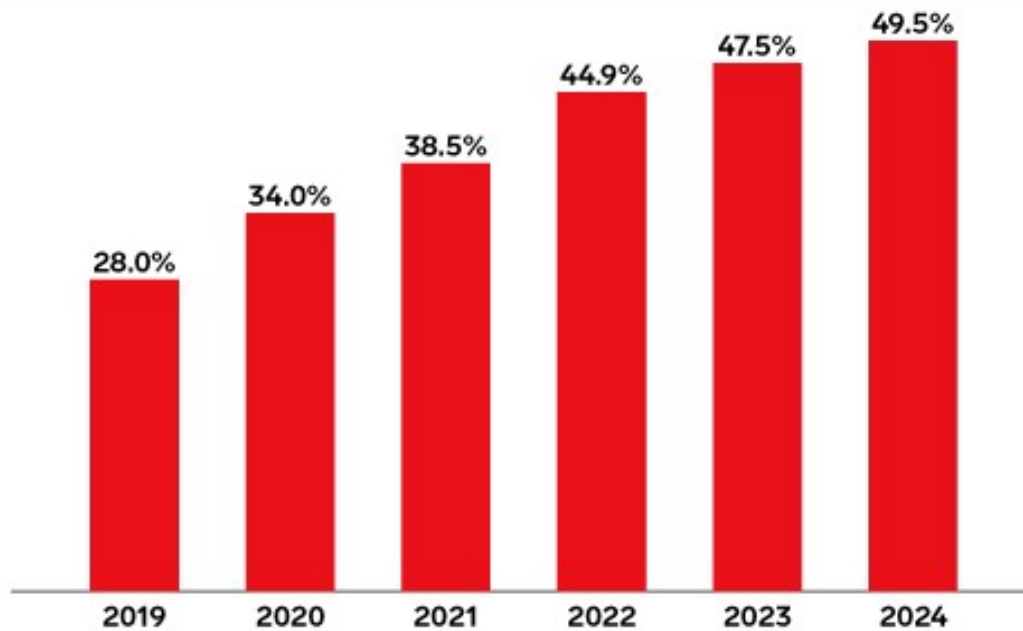


## Warehouse and Fulfillment Center Robots in the US, 2019-2024

% of warehouse and fulfillment center operators

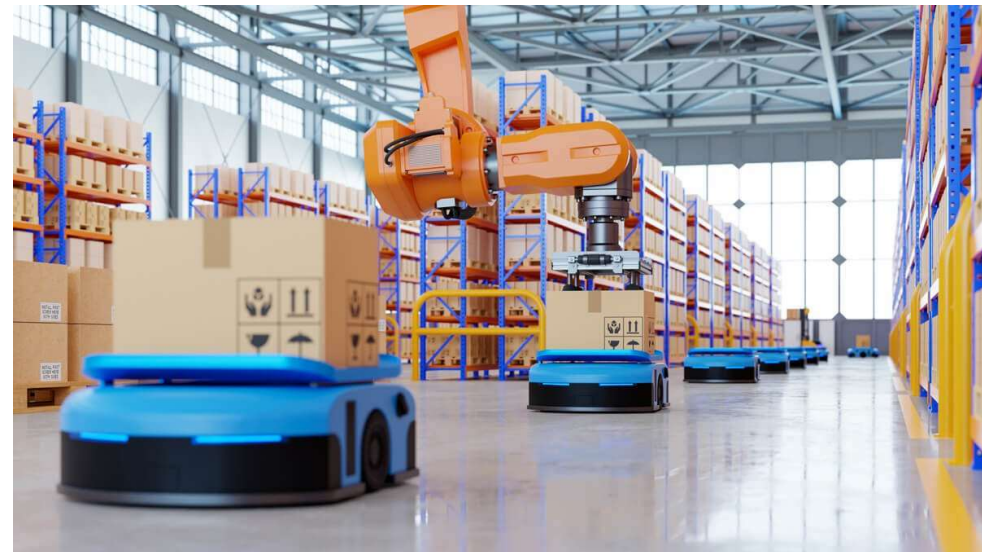
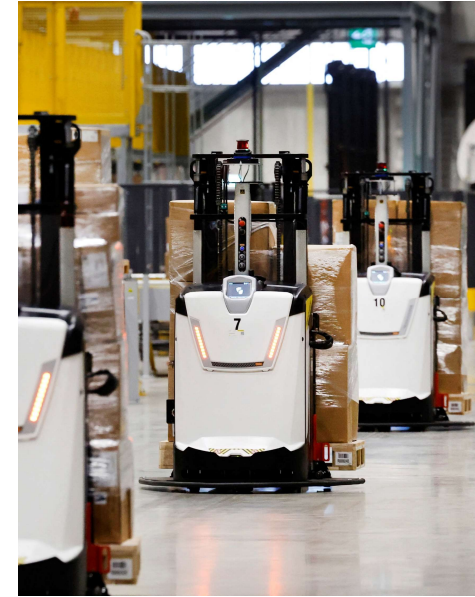
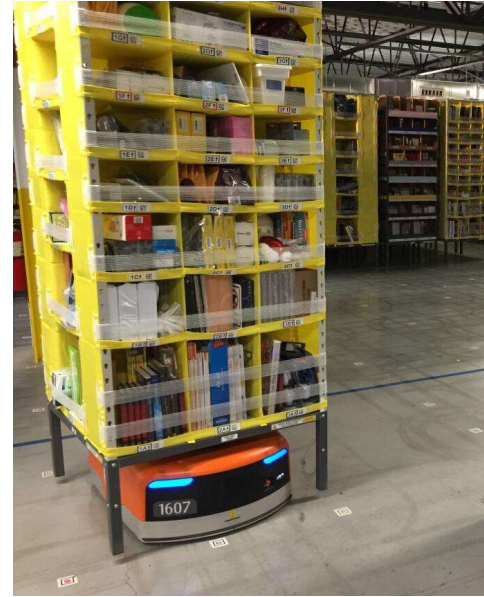


Note: autonomous units and systems operating in locations where companies' goods are stored, including warehouses, distribution centers, and fulfillment centers by an operator with more than \$10 million in annual revenues

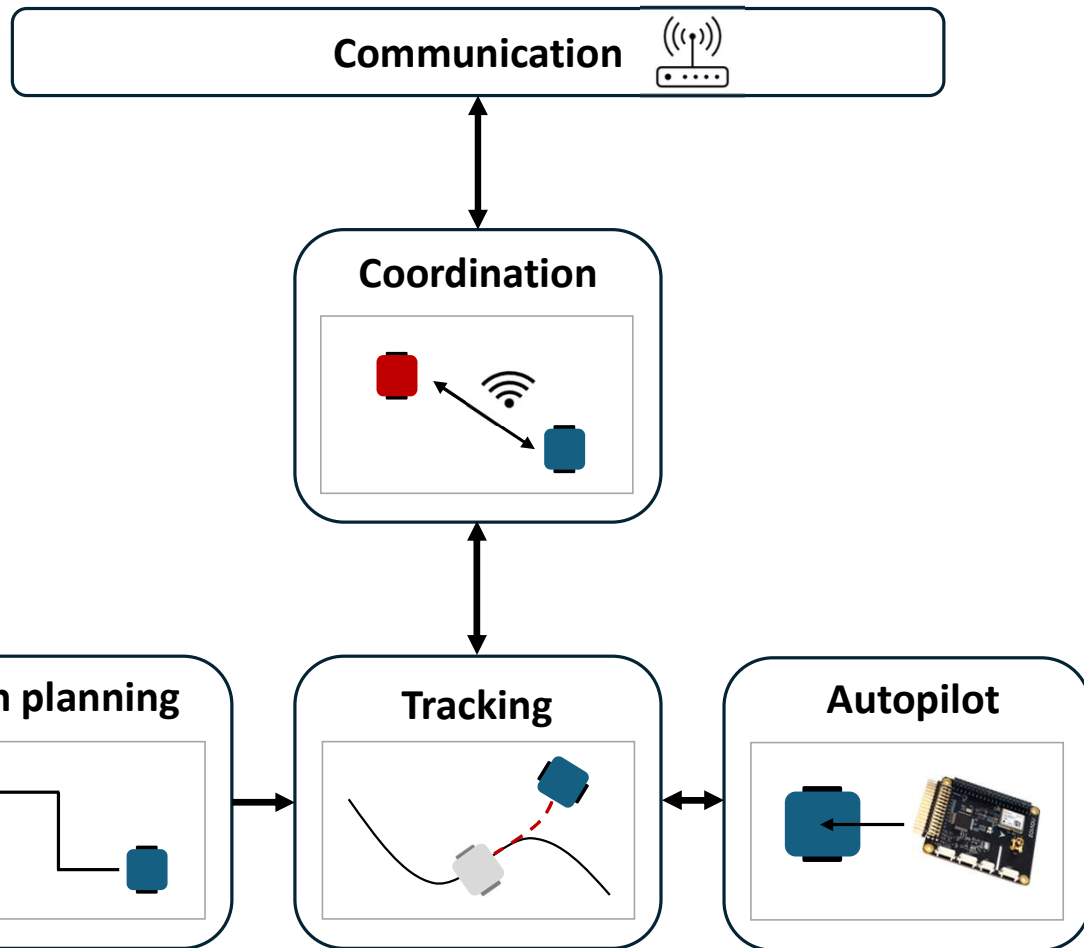
Source: eMarketer, Aug 2022

277634

eMarketer | InsiderIntelligence.com

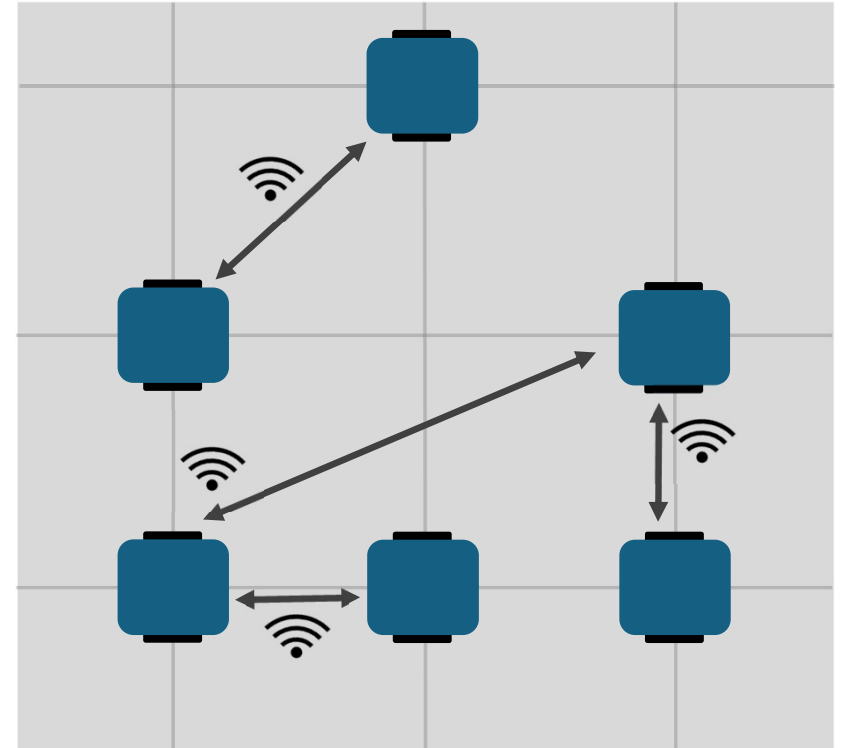
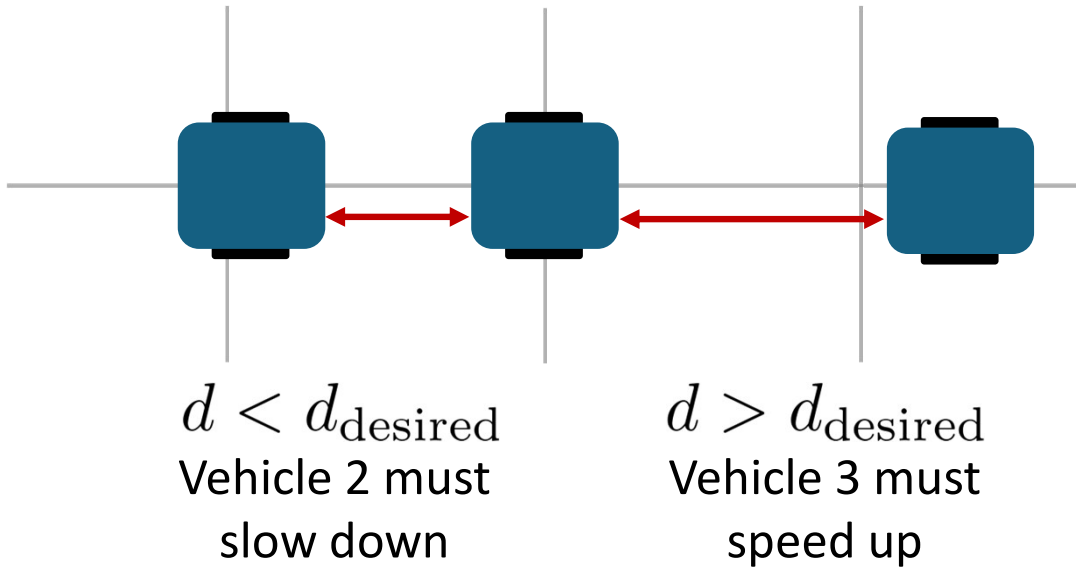


*"In the long history of humankind (and animal kind, too) those who learned to collaborate and improvise most effectively have prevailed."  
- Charles Darwin*



**Coordination is essential in large fleets to minimize time-wasting accidents**

**Collision avoidance is performed by adjusting the speed of the vehicles**



**All-to-all communication is not required**

**The algorithm is robust to communication faults and other disturbances**

